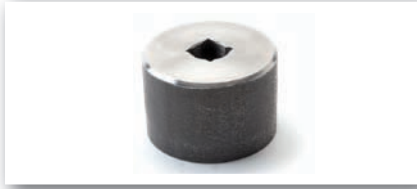


Spin-It



With the Perma-Cote **Spin-It**, Perma-Cote can be tightened much faster than with conventional tools. Because the **Spin-It** never touches the coating, damage to the conduit is eliminated.

CATALOG #	DESCRIPTION
PMSPIN-IT-3/4	3/4" Spin-It
PMSPIN-IT-1	1" Spin-It
PMSPIN-IT-1-1/4	1-1/4" Spin-It
PMSPIN-IT-1-1/2	1-1/2" Spin-It
PMSPIN-IT-2	2" Spin-It

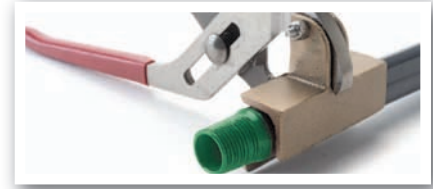
Plasti-Socket



Plasti-Socket is a fiber-glass encapsulated 3/8" drive socket for use with the square fiberglass encapsulated U bolt and beam clamp nuts used in the Perma-Cote conduit support system. The **Plasti-Socket** helps avoid coating damage from metal sockets, pliers or wrenches.

CATALOG #	DESCRIPTION
PMPLASTISOCKET-3/8	3/8" Plasti-Socket

Z-Wrench



Z-Wrench features extra wide jaws which spread the clamping force, enabling the tool to grip without marring the surface of the conduit. The "V" shaped upper jaw allows **Z-Wrench** to accommodate a wide range of conduit sizes. Shallow grooves in the upper and lower jaws provide an excellent grip.

CATALOG #	DESCRIPTION
PMJPZ1	1/2" - 1-1/4" Z-Wrench
PMJPZ2	1-1/2" - 2-1/2" Z-Wrench

JAWS 3



JAWS 3 are a set of aluminum-nickel-bronze vise jaws designed to replace the regular jaws in a RIGID #23 or #40-A pipe vise. They completely protect the exterior coating from damage caused by the vise jaws when cutting or threading.

CATALOG #	DESCRIPTION
PMJAWS3-#23	JAWS3 #23 Pipe Vise
PMJAWS3-#40-A	JAWS3 #40-A Tripod Pipe Vise

Half Shell Clamps



Half Shell Clamps are designed to cover a large surface area when clamping conduit, especially in a chain vise. This allows for a strong grip without damaging the exterior coating.

CATALOG #	DESCRIPTION
PMHLF-SHL-CLP2	2" Half-Shell Conduit Clamp
PMHLF-SHL-CLP2-1/2	2-1/2" Half-Shell Conduit Clamp
PMHLF-SHL-CLP3	3" Half-Shell Conduit Clamp
PMHLF-SHL-CLP3-1/2	3-1/2" Half-Shell Conduit Clamp
PMHLF-SHL-CLP4	4" Half-Shell Conduit Clamp
PMHLF-SHL-CLP5	5" Half-Shell Conduit Clamp
PMHLF-SHL-CLP6	6" Half-Shell Conduit Clamp

Hickey



The **Perma-Cote Hickey** is a special bending tool with a 40 mil PVC coating which reduces the possibility of damage during conduit bending.

CATALOG #	DESCRIPTION
PMHICKEY	1/2" & 3/4" Conduit Bender

Touch Up & Repair Compounds

Perma-Cote Touchup Compounds are available to repair minor damage to the exterior PVC factory coating. The exterior PVC touchup compound is gray and available in a 12 oz. aerosol can, and a pint can with brush-top applicator.

The approved thread compound touchup compound is available in a pint can with a brush-top applicator.

See the installation section of the buyers' guide for more information on using the Perma-Cote touchup compounds.



PERMA-COTE TOUCH UP COMPOUNDS

CATALOG #	DESCRIPTION	SIZE
PMTC-1700	Exterior Spray Type (Gray)	12 oz.
PMTC-1600	Brush Top Coating Touch Up Compound	1 pt.
PMTHREAD-COMPOUND	Approved Conductive Compound-Brush-Top Pint	1 pt.



The PVC-Coating Repair Kit is a UL recognized two part epoxy capable of bonding to PVC and steel or aluminum substrates. It includes all necessary tools in order to repair the damaged area and is dark grey in color.

PVC-COATING REPAIR KIT

CATALOG #	DESCRIPTION
PMPVCREPAIR-KIT	PVC-Coating Repair Kit